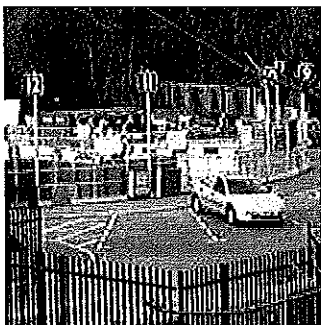
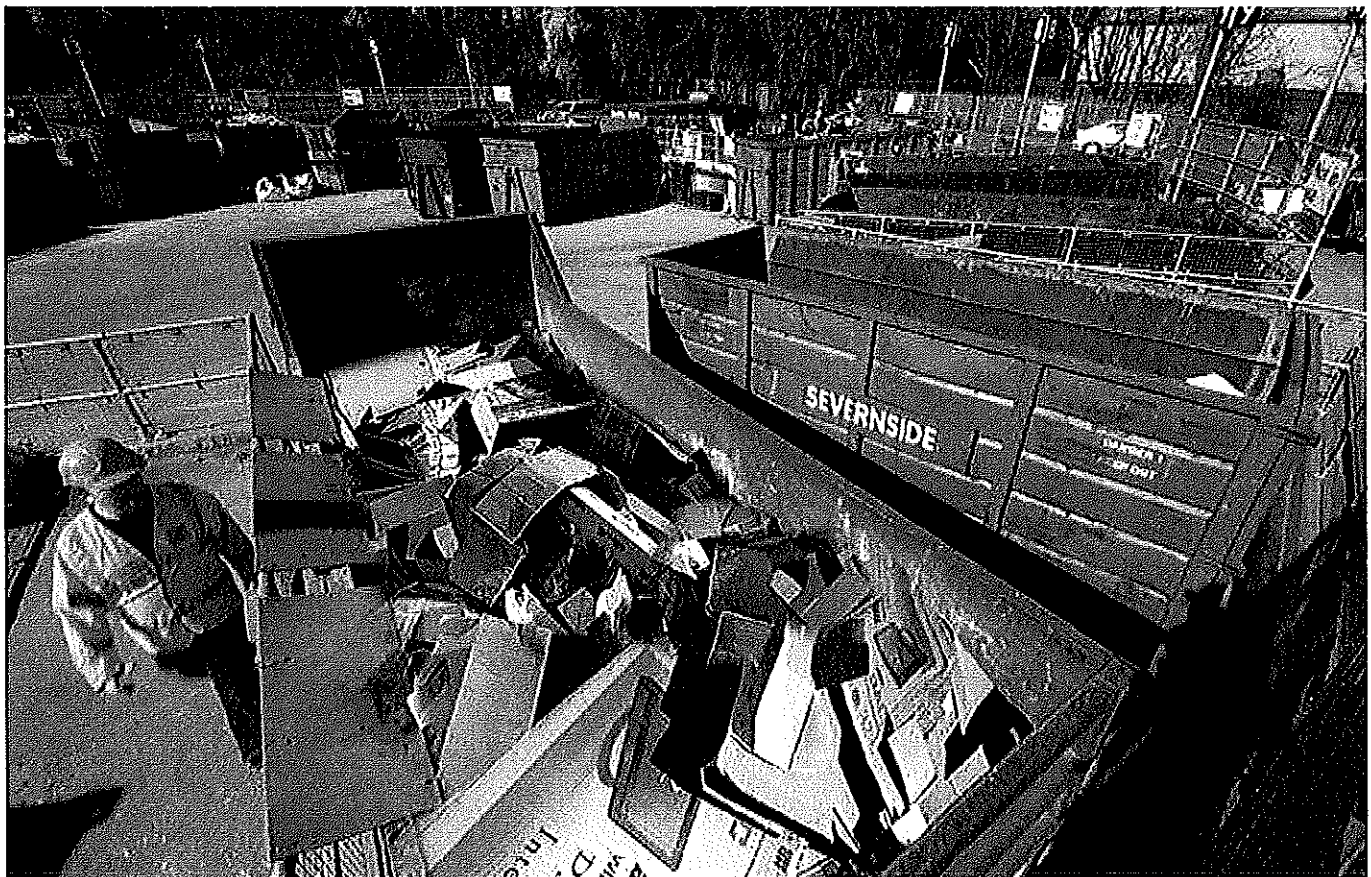


Shaping Hampshire

Consultation on proposals for changes to the Household Waste Recycling Centre Service



Contents

The purpose of this consultation	3
Why your views are important	3
How to have your say	4
Background to this consultation	5
General information about the Household Waste Recycling Centre network	7
The proposals	11
For information only: charging for access to Household Waste Recycling Centres	15
Consultation questionnaire	16

Consultation on proposals for changes to the Household Waste Recycling Centres

The consultation period opens on Wednesday, 16 March 2016 and closes at midday on Wednesday, 25 May 2016.

The purpose of this consultation

Hampshire County Council is asking for the views of service users, members of the public and other interested parties, on future changes to the Household Waste Recycling Centres (HWRC) service.

This supporting information document sets out the background and the proposals for changing the way the County Council's HWRC service is run. The proposals include changing opening hours and/or the possible closure of some HWRC sites.

The Executive Lead Member for Economy, Transport and Environment, will consider the feedback from this consultation at a Decision Day later in summer 2016. It is possible that a combination of the proposals, and options within them, will be considered.

Why your views are important

The amount of funding the County Council receives from central Government has more than halved in recent years. Public sector budgets are expected to remain under pressure in the future. It is no longer feasible to deliver services at the same level, and in the same way. Therefore, the County Council is faced with having to make some difficult decisions to achieve a balanced budget, as required by law – and provide vital public services to the people of Hampshire.

To meet the current savings target the County Council is proposing to reduce the annual cost of running the HWRC network by £1.55million. However, it is likely that additional savings will be required in the future in light of further reductions in local government funding announced by the Government in February 2016. Your views on these proposals for the HWRCs are very important. The County Council will use your feedback to prioritise options and inform decisions which contribute towards the savings required of the Authority.

How to have your say

As responding to the consultation is voluntary, you do not need to answer all the questions if you do not wish to do so. To respond to the consultation online, please visit:

www.hants.gov.uk/hwrc2016. Alternatively, if you are completing the accompanying paper questionnaire (pages 16–22 of this document), please detach this questionnaire from this document and post it to:

Freepost HAMPSHIRE

Please do not write anything else on the envelope. Also write '**HWRC**' on the reverse of the envelope.

Please ensure that 'HAMPSHIRE' is written in uppercase. No stamp is required to post your response.

Responses should be received by **midday on Wednesday, 25 May 2016**.

Please note that responses received after this time will not be included in the findings report.

The analysis of responses from this consultation will be published and presented to the Executive Lead Member for Economy, Transport and Environment, prior to a decision in summer 2016.

Alternative formats

To request this information and the questionnaire in another format such as large print, audio or braille, please email: **hwrc.consultation@hants.gov.uk**, or call: **0300 555 1389**.

If you have any queries about this consultation, please email Hampshire County Council at: **hwrc.consultation@hants.gov.uk**, or call: **0300 555 1389**.

Data protection

Hampshire County Council adheres to the requirements of the UK Data Protection Act 1998. Hampshire County Council is registered on the public register of data controllers which is looked after by the Information Commissioner. Under the Data Protection Act the information which you have provided in this questionnaire will be used only for the purposes of this survey. All individual responses will be kept confidential, but views from organisations may be published in full.

Background to this consultation

Shaping Hampshire – spending review consultation

The amount of funding the County Council receives from central Government has more than halved in recent years and further reductions are imminent.

In February 2016, Government announced its funding plans for local authorities for 2016/17 and the following three years. The County Council lost £48 million from its grant for next year alone. Government calculations assumed that local authorities would raise Council Tax. Consequently, for the first time in six years, the County Council has agreed to increase Council Tax by 3.99 per cent, which is the maximum amount permissible without a public referendum. However, this alone will not balance the budget and 2 per cent of this increase can only be used for adult social care to help address the rise in demand for services.

In 2017/18, assuming that Council Tax increases by the same amount in that year, the County Council will still need to find savings of £98 million.

This means the County Council has to make tough choices about spending on services.

To help the County Council make the right choices, in the spring/summer 2015, a countywide consultation was undertaken. This invited views on the three main options for meeting the anticipated £98 million of savings by April 2017.

Full details of the consultation findings can be found on the County Council's website www.hants.gov.uk/spendingreviewsurvey

The three main options considered in the consultation were:

- raising the rate of Council Tax;
- using the County Council's reserves differently; and
- reducing spending on specific services.

Overall there was a high level of support for the County Council's existing financial strategy which includes a combination of these three options. This would see the funding shortfall managed through:

- running the County Council more efficiently by reducing the cost of back office functions;
- using savings to help to protect front line services;
- prudently using some reserves to manage the cost of change;
- reducing spending on some services; and
- increasing Council Tax (32 per cent of respondents were willing to see a Council Tax increase of 1.99 per cent).

Services for children, older people and vulnerable people were ranked as being the 'most important' services for the County Council to continue to support and deliver.

Savings options for Economy, Transport and Environment

The County Council must meet a funding shortfall of £98 million by April 2017, with £14.7million planned to be met from the Economy, Transport and Environment department's budget.

In the summer of 2014, the County Council undertook a consultation on proposals relating to the HWRCs. That consultation informed the service options which were included in the new HWRC management contract which starts on 01 April 2016, and engaged the public in an ongoing debate about savings, efficiencies and the different service delivery options.

As a result of the 2014 consultation, the decision was taken to change opening hours at HWRC sites from 01 April 2015. Approval was also given to further enhance trade waste controls, operate a trade waste service at HWRC sites and charge for the disposal of non-household waste, all of which form part of the new HWRC management contract.

In the spending review consultation, the options on which respondents preferred the County Council to make savings in the service areas for the Economy, Transport and Environment Department were:

- dimming streetlights;
- reviewing the amount of waste produced by households and increasing the proportion that can be recycled; and
- reviewing local traffic management schemes which are not led by safety concerns or legal requirements.

The Economy, Transport and Environment Department is exploring proposals around some of these options, through separate consultations in 2016/17, as well as the other options considered in the Spending Review consultation.

General information about the Household Waste Recycling Centre network

Hampshire County Council operates a network of 24 HWRC sites. Please note that both Southampton City Council and Portsmouth City Council operate one site each, and those sites are **not** included in this consultation.

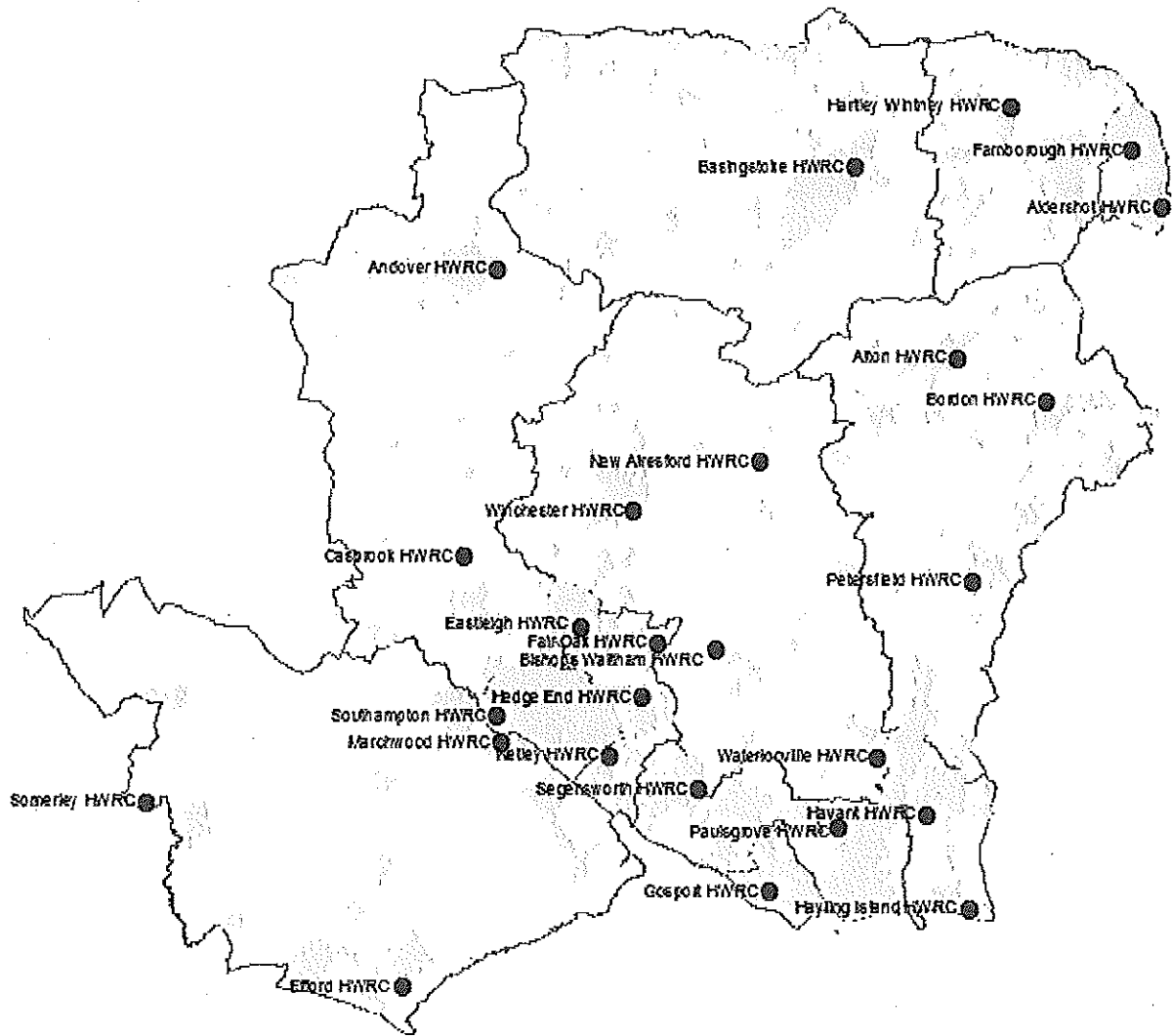
The County Council has a duty under the Environmental Protection Act 1990 to arrange "for places to be provided at which persons resident in its area may deposit their household waste and for the disposal of waste so deposited". The duty states that each waste disposal site should be:

- within the area of the Authority and reasonably accessible to residents in its area;
- open and available to residents to bring waste for disposal at reasonable times, including at least a period of time on a Saturday; and
- available free of charge to persons resident in the area to bring waste for disposal.

Within this legal duty there is no set requirement for the number of HWRCs that local authorities should provide; a local authority may even decide that provision of just one site is sufficient. There is also no guidance for how much of the week sites should remain open, except for a period of time on a Saturday.

Hampshire County Council currently provides more HWRC sites than other, similar local authorities. HWRC sites are also currently open for more hours, and/or for more days of the week compared with some other networks operated by other local authorities.

Map of the Hampshire HWRC network (including Southampton and Portsmouth sites):



The table below provides some key information about each of the 24 Hampshire County Council HWRC sites:

HWRC site name	District area	Size (acres)	Site type*	How busy is the site? (tonnes of waste received (2014/15))	What proportion of the sites waste is recycled? (2014/15)	Distance by road to the nearest HWRC site (miles)	Site operating costs (range, based on cost per tonne of waste)***
Aldershot	Rushmoor	0.5	Single	5,943	76%	5.1	£££
Alresford	Winchester	0.17	Single	2,082	60%	7.7	£££
Allton	East Hampshire	0.84	Split	6,450	87%	6.8	££
Andover	Test Valley	1.4	Split	11,720	81%	18.1	£
Basingstoke	Basingstoke and Deane	1.1	Split	17,276	82%	9.9	£
Bishops Waltham	Winchester	0.55	Single	4,030	79%	3.6	£££
Bordon	East Hampshire	0.62	Split	8,086	89%	6.8	££
Casbrook (Romsey)	Test Valley	0.35	Single	5,437	92%	8.6	£££
Eastleigh**	Eastleigh	0.3	Single	7,492	82%	5.0	££
Efford (Lymington)	New Forest	0.59	Split	11,381	87%	15.4	££
Fair Oak	Eastleigh	1.04	Single	4,734	88%	3.3	£££
Farnborough	Rushmoor	0.91	Split	13,952	78%	5.1	£
Gosport	Gosport	0.9	Split	16,752	80%	6.8	£
Hartley Wintney	Hart	0.27	Single	5,745	80%	8.3	£££
Havant	Havant	0.78	Split	17,458	78%	4.9	£
Hayling Island	Havant	0.15	Single	3,231	81%	6.9	£££
Hedge End	Eastleigh	0.45	Split	7,817	93%	3.3	££
Marchwood	New Forest	1.1	Single	11,463	89%	4.6	££
Netley	Eastleigh	1.17	Split	11,070	90%	6.5	£
Petersfield	East Hampshire	0.4	Single	6,104	91%	11.3	££
Segensworth	Fareham	1	Split	17,274	84%	6.1	£
Somerley (New Forest)	New Forest	0.68	Split	8,607	89%	17.3	££
Waterlooville	Havant	1.85	Split	12,846	83%	4.9	£
Winchester	Winchester	1.14	Split	9,747	89%	7.4	£

* 'Site type' refers to whether the HWRC is a 'single level' or 'split level' site. 'Single level' sites are older style sites where the bins are on the same level as the public areas. 'Split level' sites are newer style sites with bins located on a level below the public areas, in keeping with current national guidance.

** Eastleigh HWRC will be replaced by a new, larger split level site in late 2016 (the rebuilding costs not being funded by Hampshire County Council).

*** Based on the overall cost per tonne of waste that is received. '£' refers to the top eight sites which cost the least per tonne of waste; '£££' refers to the eight sites which are the most expensive to run per tonne of waste; '££' refers to the eight sites which are in the middle of these two ranges.

Savings already made

The County Council has already achieved, or is planning to achieve savings against the overall cost of running the HWRCs, including:

- establishing a new, more efficient contract for management of the HWRC sites;
- preventing trade waste; and
- preventing residents who live outside Hampshire using the sites.

The proposals

To meet the current savings target the County Council is proposing to reduce the annual cost of running the HWRC network by £1.55million. Therefore, it is proposed to achieve savings by either reducing the number of hours, or days, sites are open, and/or closing down some of the smaller and less busy sites.

Sites are open seven days a week, only closing on 1 January, 25 December and 26 December throughout the calendar year.

Opening hours at the 24 HWRC sites in Hampshire (as well as at the sites in Portsmouth and Southampton) are:

- Summer (1 April – 30 September) 09:00–18:00
- Winter (1 October – 28 or 29 February) 09:00–16:00
- Spring (1 March – 31 March) 09:00–17:00

Options considered and rejected

In late 2014, the County Council considered options to charge site users to access HWRC sites. This would have been a nominal charge to assist in the cost of managing the service. However, in early 2015, the Government prohibited this by law. As a result, the County Council took the decision to further review the HWRC service and this consultation forms part of that review process.

Proposal 1: to reduce opening hours

The proposal is to reduce the overall opening hours across the network. This could be done in different ways. The options being considered are, to:

Option	Approximate annual saving
Reduce opening hours at all sites by one hour per day, throughout the year	£400,000
Reduce opening hours by closing all sites on one day of the week	£450,000
Reduce opening hours by closing all sites on two days of the week, but introduce extended opening hours on one other day of the week	£800,000

Data on site usage would be used to select the most appropriate day for closure.

The potential impact of changing opening hours would be:

- all HWRC sites are open for fewer hours a day; and
- customers would have less choice regarding the times or days they were able to visit all sites.

Question 1 asks respondents to rank their preferred options for changes to opening hours.

Question 2 asks respondents to rank their preferred options for the times of day sites should open.

Proposal 2: to partially close one or more HWRC sites

These options relate to more significant reductions in the amount of time that a selected number of HWRCs are open. Other HWRC sites in the network would not be subject to the same reductions. The options being considered are, to:

Option	Approximate annual saving
Close up to 10 smaller sites during winter (1 October – 31 March)	£500,000
Having up to 10 smaller and less busy HWRC sites only opening on Saturday, Sunday and Monday	£650,000

Sites will be considered for closure according to a number of factors, including site usage, recycling performance, geographical considerations and operating costs. Information relating about this can be found in the **General information about the Household Waste Recycling Centre Network** section on pages 7–9.

The potential impact of partial site closures would be:

- the availability of certain HWRC sites would be significantly reduced;
- customers seeking to use these sites may instead have to drive further to an alternative HWRC or wait until their local site is open; and
- a core network of HWRC sites would remain unaffected by this change, and would remain open and available during the times in question.

Question 3 asks respondents to select their preferred option for the partial closure of one or more HWRC sites.

Proposal 3: to fully close one or more HWRC sites

This proposal is to close one or more HWRC sites. This proposal would judge the potential closure of one or more sites on the following criteria:

- site usage (tonnage of waste received);
- recycling performance;
- geographical location and distance from other sites; and
- operating costs.

The County Council is keen to understand which factors you think are the most important to take into account in making a potential decision about site closures.

Questions 4 and 5 ask how important certain criteria are in making a judgement about potential closure: distance to next closest site, how busy a site is, recycling performance, or site operating cost. There is also space for respondents to add any other criteria they think the County Council should consider.

Question 6 asks about preference for the closure of up to four, eight or twelve sites. Each option would make approximate annual savings of:

Option	Approximate annual saving
Fully close up to four sites	£440,000
Fully close up to eight sites	£1,050,000
Fully close up to twelve sites	£1,850,000

The potential impact of full site closures would be:

- the overall number of HWRC sites in the County would be reduced;
- customers whose local site has closed would instead have to travel further to get to the next closest site; and
- customers may find that it takes longer to dispose their waste because of the increase in the numbers using sites remaining open.

The questionnaire accompanying this supporting information document also asks:

- the respondents' order of preference of the three proposals (Changes in opening hours; partial site closures; full site closures);
- whether respondents have any other comments they would like to make, including any alternative suggestions they think the County Council should consider;
- if there are any potential positive or negative impacts the proposals would have which should be taken into account by the County Council in making a decision.

For information only: charging for access to Household Waste Recycling Centres

The County Council is prohibited by law from charging people to use a HWRC. With around four million visits to Hampshire HWRCs each year, such an approach would be likely to generate sufficient funds so that the requirements to either further reduce opening hours at sites, and/or close HWRC sites would be greatly reduced.

The County Council is interested to hear views on this, as support for such a charge could be used as evidence for a new, future approach, if the Government were to change the law to permit charging.

It is important to note that this question is for the purposes of information gathering only and does not form part of current proposals.

The question here asks if, in principle, respondents would be prepared to pay a small charge for entering HWRC sites (for example, £1 per visit).

Consultation questionnaire

To respond to the consultation online, please visit www.hants.gov.uk/hwrc2016

Alternatively, if you are completing this paper questionnaire, please detach it from this document and post it as described on page 4.

Proposal 1: to reduce opening days and hours

Please see page 12 for more information on this proposal

Question 1: Please rank each of the options according to your preference, with 1 being most preferred and 3 being the least preferred. Please indicate if you have no preference.

	No preference	1	2	3
Reduce opening hours at all sites by one hour per day, throughout the year.		X		
Reduce opening hours by closing all sites on one day of the week.			X	
Reduce opening hours by closing all sites on two days of the week, but introduce extended opening hours on one other day of the week.				X

Question 2: Please rank each of the options according to your preference, with 1 being most preferred and 3 being the least preferred. Please indicate if you have no preference.

	No preference	1	2	3
Earlier opening (open sites before 09:00) and earlier closing times				X
Maintain a 09:00 opening time		X		
Later opening (open sites after 09:00) and later closing times			X	

Proposal 2: to partially close one or more HWRC sites

Please see page 13 for more information on this proposal

Question 3: Which of the following options do you prefer? (please only tick one option):

Reduce opening hours by closing up to 10 smaller sites during winter (1 October – 31 March)	<input type="checkbox"/>
Having up to 10 smaller and less busy HWRC sites only opening on Saturday, Sunday and Monday	<input checked="" type="checkbox"/>
No preference	<input type="checkbox"/>
Don't know	<input type="checkbox"/>

Proposal 3: to fully close one or more HWRC sites

Please see page 14 for more information on this proposal

Question 4: Listed below are four criteria for making a judgement about potential closures of one or more HWRC sites. Please rank each of the criteria according to your preference, with 1 being most preferred and 4 being the least preferred. Please indicate if you have no preference.

	No preference	1	2	3	4
Site usage (tonnage of waste received)		X			
Recycling performance					X
Geographical location and distance from other sites				X	
Operating costs			X		

Question 5: If there are any other criteria which you think should be considered when making a judgement about potential closure of a HWRC site, please list them below (continuing on an additional sheet if necessary):

Question 6: Please rank each of the options according to your preference, with 1 being most preferred and 3 being the least preferred. Please indicate if you have no preference.

	No preference	1	2	3
Fully close up to four sites		X		
Fully close up to eight sites			X	
Fully close up to twelve sites				X

Question 7: Please rank each of the three proposals according to your preference, with 1 being most preferred and 3 being the least preferred. Please indicate if you have no preference.

	No preference	1	2	3
Proposal 1: To reduce opening hours		X		
Proposal 2: to partially close one or more HWRC sites			X	
Proposal 3: to fully close one or more HWRC sites				X

Further comments

Question 8: Do you have any comments you would like to make, including any alternative suggestions you think we should consider? Please answer in the box below, continuing on an additional sheet if necessary:

Equality considerations

Hampshire County Council has a duty to take into account the impact of their decisions on people with protected characteristics under the Equality Act 2010 (age, disability, gender, gender reassignment, marriage and civil partnership, pregnancy, maternity, race, religion or belief, and sexual orientation).

Question 9: Are there any positive or negative impacts relating to equalities that you believe that the County Council should take into account in the decision making process? Please tick one box only.

Yes

No

If 'yes', are you able to provide any supporting evidence and suggest any ways to reduce or remove any potential negative impact and increase any positive impact? Please answer in the box below, continuing on an additional sheet if necessary:

--

Charging for access to HWRC Sites

Please see page 15 for more information

This question is for the purposes of information gathering only and does not form part of current proposals to make the proposed annual savings

Please indicate whether you would be prepared to pay a small charge for entering HWRC sites, for example £1 per visit. Please only tick one option:

Yes, I would consider paying a small charge to access HWRC sites	
No, I would not consider paying a small charge to access HWRC sites	
No preference	
Don't know	

About you

The County Council would like to know whether you are responding to this consultation as an individual, or on behalf of an organisation, for example, a parish or town council, charity or voluntary group, borough or district council, or a local business. Feedback from individuals will be completely anonymous, but views from organisations may be published in full.

Are you responding to this consultation as an individual or on behalf of an organisation?
Please only tick one option:

As an individual	<input type="checkbox"/>
On behalf of an organisation	<input type="checkbox"/>

If you are responding on behalf of an organisation, please can you indicate the type of organisation below:

- Parish or town council
- Borough, district or city council
- Charitable organisation
- Local business
- Residents' association
- Local community or voluntary group

Other – please write in the box below:

If you are responding on behalf of an organisation, please tell us which organisation or group on whose behalf you are submitting this response. Please remember that the Response Form and the information you provide may be subject to publication or release to other parties.

Name of organisation/group:

Please tell us your full postcode. The County Council ask this question for analysis purposes only and to show the coverage of the consultation. Please provide your full postcode by writing in the box below:

--	--	--	--	--	--

The County Council would like to know which HWRC site(s) you visit most.

Please indicate below **which HWRC site you use the most frequently**
(please only tick one option):

<input type="checkbox"/>	Aldershot
<input type="checkbox"/>	Alresford
<input type="checkbox"/>	Alton
<input type="checkbox"/>	Andover
<input type="checkbox"/>	Basingstoke
<input type="checkbox"/>	Bishops Waltham
<input type="checkbox"/>	Bordon

<input type="checkbox"/>	Casbrook (Romsey)
<input type="checkbox"/>	Eastleigh
<input type="checkbox"/>	Efford (Lymington)
<input type="checkbox"/>	Fair Oak
<input type="checkbox"/>	Farnborough
<input type="checkbox"/>	Gosport
<input type="checkbox"/>	Hartley Wintney

<input type="checkbox"/>	Havant
<input type="checkbox"/>	Hayling Island
<input type="checkbox"/>	Hedge End
<input type="checkbox"/>	Marchwood
<input type="checkbox"/>	Netley
<input type="checkbox"/>	Petersfield
<input type="checkbox"/>	Portsmouth

<input type="checkbox"/>	Segensworth
<input type="checkbox"/>	Somerley (New Forest)
<input type="checkbox"/>	Southampton
<input type="checkbox"/>	Waterlooville
<input type="checkbox"/>	Winchester

<input type="checkbox"/>	I do not use HWRC sites
--------------------------	-------------------------

Please indicate below **any other HWRC site(s) you have used** in the last 12 months:
(please tick all that apply):

<input type="checkbox"/>	Aldershot
<input type="checkbox"/>	Alresford
<input type="checkbox"/>	Alton
<input type="checkbox"/>	Andover
<input type="checkbox"/>	Basingstoke
<input type="checkbox"/>	Bishops Waltham
<input type="checkbox"/>	Bordon

<input type="checkbox"/>	Casbrook (Romsey)
<input type="checkbox"/>	Eastleigh
<input type="checkbox"/>	Efford (Lymington)
<input type="checkbox"/>	Fair Oak
<input type="checkbox"/>	Farnborough
<input type="checkbox"/>	Gosport
<input type="checkbox"/>	Hartley Wintney

<input type="checkbox"/>	Havant
<input type="checkbox"/>	Hayling Island
<input type="checkbox"/>	Hedge End
<input type="checkbox"/>	Marchwood
<input type="checkbox"/>	Netley
<input type="checkbox"/>	Petersfield
<input type="checkbox"/>	Portsmouth

<input type="checkbox"/>	Segensworth
<input type="checkbox"/>	Somerley (New Forest)
<input type="checkbox"/>	Southampton
<input type="checkbox"/>	Waterlooville
<input type="checkbox"/>	Winchester

<input type="checkbox"/>	I do not use HWRC sites
--------------------------	-------------------------

Thank you

Thank you for taking the time to respond to this consultation.

A summary of the findings of this consultation will be reported to the Executive Lead Member for Economy, Transport and Environment in summer 2016.